

The 10th Annual

Yesterday & Today

Brought to you by
The Vermont Journal & The Shopper

2020





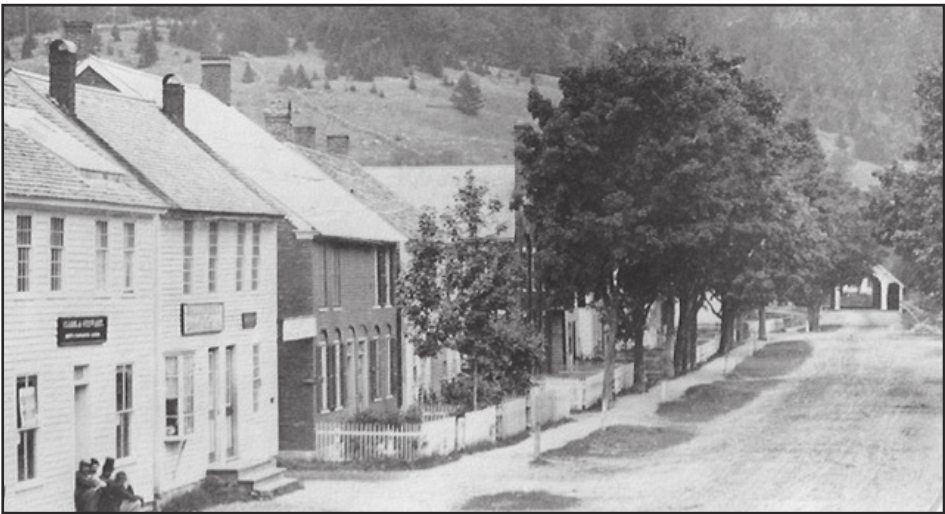
Bellows Falls Square looking south circa 1900s. Paving stone streets with trolley tracks, Mill Street going “under the hill,” early streetlight suspended over the intersection. What is now Jim’s Arcade is on the right past the stairs.

PHOTO PROVIDED BY BELLOWS FALLS HISTORICAL SOCIETY



J. M. Giddings moving the Country Girl Diner to Chester.

PHOTO PROVIDED BY CHESTER HISTORICAL SOCIETY



Depot Street covered bridge in Proctorsville.

PHOTO PROVIDED BY CAVENDISH HISTORICAL SOCIETY



The Utley Brook covered bridge near what is now Londonderry Marketplace.

PHOTO PROVIDED BY LONDONDERRY ART & HISTORICAL SOCIETY

Thank You

Thank you to everyone who supported this Yesterday & Today section, and to those who sent in photos.

THE Vermont Journal
Est. 2000

THE SHOPPER
Est. 1961



The Eagle Hotel in Charlestown.

PHOTO PROVIDED BY COBB CO. IN CHARLESTOWN



The Crowley Cheese Factory located in Healdville. It has been in continuous operation since 1881, and was owned by the Crowley family until 1966.

PHOTO PROVIDED BY MOUNT HOLLY COMMUNITY HISTORICAL MUSEUM

Est. 2010

WILLOW FARM

Dog Day Care & Boarding

Retail Shop & Grooming

(802) 886-5000

www.WillowFarmVermont.com | Facebook

Red Barn at 21 Route 106, N. Springfield, VT

Mon - Sat from 7 - 11 am, Sun 9 - 11 am, and Daily from 4 - 6 pm

Est. 1992

COUNTRY GIRL DINER

GREAT FOOD AND GREAT FRIENDS. THAT’S WHAT WE’RE ALL ABOUT.

802.875.1003 | www.countrygirldiner.com

46 Vermont Rt. 103 South, Chester, Vt.

Est. 2006

The Book Nook

Helping Readers Find Books Since 2006

History begins in novel and ends in essay.
~Thomas Babington Macaulay

136 Main Street, Ludlow, VT 802-228-3238 www.thebooknookvt.com

Est. 2019

Cobb Co.

We are an electronics, accessory, and hobbyist retailer. Featuring top brand products for the devices you love.

603-826-0171

200 Main St. Suite A, Charlestown, NH

www.CobbCo.Store

Facebook @Cobbcompany

Est. 1875

A RICH, LOCAL HISTORY.

Since 1875, Savings Bank of Walpole has been the savings bank of you and our community and we look forward to continuing to do so for a long time to come.

Savings Bank of Walpole
since 1875

walpolebank.com

Member FDIC

Est. 1995

Blue Sky

Gifts you love to give

Jewelry • Scarves • Pottery • Candles

228-2280

160 Main Street, Ludlow



Carey's Super-Duper Market in North Springfield.
PHOTO PROVIDED BY SPRINGFIELD ART & HISTORICAL SOCIETY



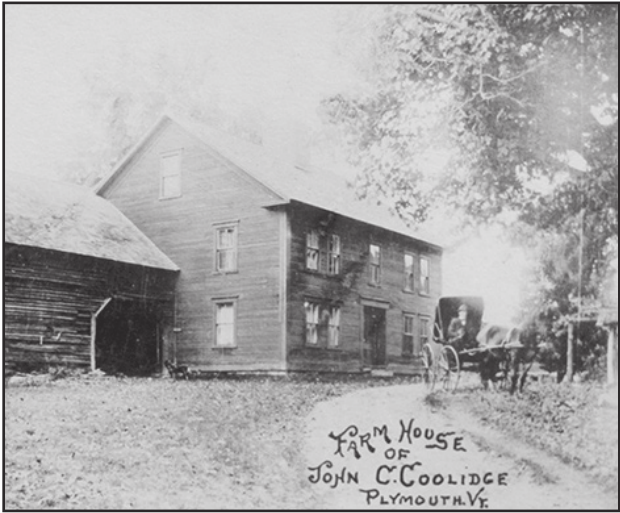
1930s Weston Old Home Day.
PHOTO PROVIDED BY WESTON HISTORICAL SOCIETY



Downtown Tyson with Tyson Inn.
PHOTO PROVIDED BY RON PATCH



Old hearse used in Ascutneyville, Vt. at Route 5 and Route 131. Heiser House is pictured in the background; Arthur Marston driving horses. Gift from Weathersfield Middle School Leadership group.
PHOTO PROVIDED BY WEATHERSFIELD HISTORICAL SOCIETY



Farmhouse of John Coolidge in Plymouth.
PHOTO PROVIDED BY RON PATCH



Londonderry view of West River.
PHOTO PROVIDED BY TED SPAULDING

On the Cover

Top: Pollard's Store in the late 1800s in Proctorsville, Vt.

Bottom: DG Bodyworks, which sits on the same site as the old Pollard's Store. A sign on the front says "Pollard Block 1895."

THE Vermont Journal

THE SHOPPER

Est. 2018



Vermont Picker
802-875-2062
Route 103, Chester, VT 05143
Open 10am - 5pm Daily

Est. 1926



LISAI'S CHESTER MARKET
Est. 1926 • Choice Meats
Visit our Website www.LisaisChesterMarket.com
Route 103 • Chester Depot
Open 7 Days A Week
8AM - 8PM • 875-4715


Est. 2001



CHRISTOPHER FAUVER, DDS
FAMILY & COSMETIC DENTISTRY
802-885-3191
2 Chester Rd | Suite 10
Springfield, VT

Est. 1993

WALPOLE VALLEY TIRE



Hours: Monday - Friday 8:00 - 5:00
Saturday 8:00 - Noon
Route 12 • Walpole, NH
603-445-2060

Est. 2017



Neal's
Serving American Comfort Foods
Full Bar • Craft Beers • Wine
802-226-7251
2588 Route 103, Proctorsville, VT
Like us on Facebook

Est. 2006

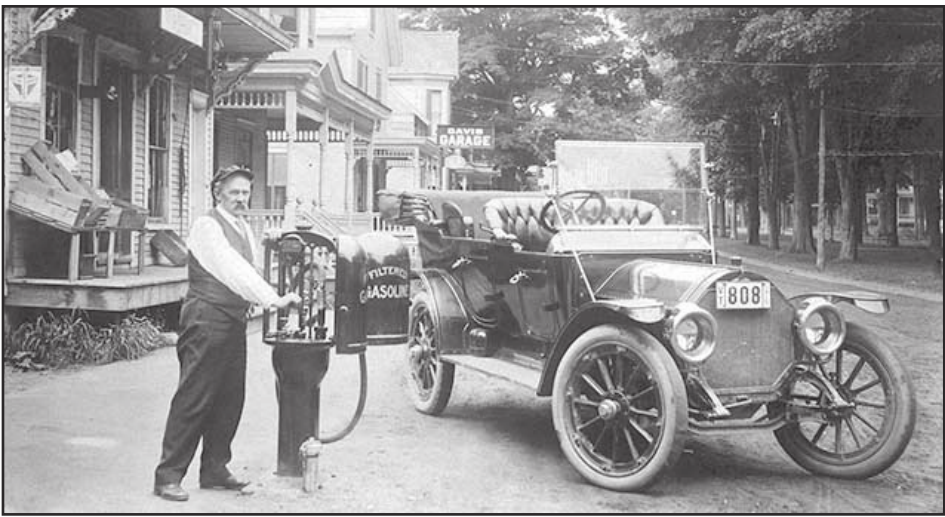
LAWRENCE & LOBER

ELECTRIC
www.llelectricservices.com
lawrelec@sover.net
Tel: 802-460-3479 Fax: 802-460-3480
15 Barker St. Bellows Falls, VT
www.LLElectricServices.com
info@LLElectricServices.com



Intersection of Main and Depot streets in Ludlow.

PHOTO PROVIDED BY RON PATCH



Frank Davis and his Stevens Durea auto in front of what is now Southern Pie Café in Chester.

PHOTO PROVIDED BY DANNY CLEMONS



Atkinson Street in Bellows Falls, circa 1910, at intersection of Williams St. Livery stable on left by sign.

PHOTO PROVIDED BY BELLOW'S FALLS HISTORICAL SOCIETY



Railroad workers who maintained the section of tracks near the Healdville Station crossing.

PHOTO PROVIDED BY MOUNT HOLLY COMMUNITY HISTORICAL MUSEUM

Est. 2010

BREWFEST BEVERAGE COMPANY

Take **GOOD BEER** Home

Craft Beer - Liquor - Wine

199 Main Street - Ludlow, VT
802-228-4261

Est. 2017

Gussie's Place

Boarding **a country K9 kennel** Daycare

Open Mon-Sat 7am-6pm; Sun 9am-6pm; Closed Noon-2pm

802-875-3535
284 Elm Street | Chester, VT 05143
GussiesPlace@vermontel.net
www.GussiesPlace.com | Facebook

Est. 2012

MR. DARCY'S BAR & GRILL

Open Mon., Tue., Wed., Thu. & Sun. 4:00PM - 9:00PM
Fri. & Sat. 4:00pm - 10:00pm

31 Route 103 South • Ludlow, Vermont
802-228-7222

Est. 1986

GOODYEAR
CANON TIRE, INC.

CANON TIRE

I-91, Exit 8, Ascutney, VT
802-674-5600

OVER 2000 BROKEN-IN TIRES
MANY SETS OF 4

NEW TIRES TOO!!

Est. 1996

GREATER FALLS INSURANCE
serving VT and NH since 1996

Home • Auto • Farm • Business
Motorcycle • Recreation Vehicles

7190 US Route 5 • Westminster, VT 05158
802-463-1900
www.GreaterFallsInsurance.com

Est. 1946

K.BEEBE, INC.

CABLE TOOL WELL DRILLING & HEATING

Pump Sales & Service

K. SHELDON BEEBE
802-463-3725
Bellows Falls, Vermont 05101

YOUR WATER SYSTEMS EXPERT

Est. 2005

Springfield Family Dental

Aman Syed DDS

17 Old Chester Road
Springfield, VT
802-885-4581

Est. 2012

THE UPPER PASS LODGE

Saturday & Sunday for Breakfast 8:00-10:30 am
Wednesday - Sunday for Dinner 5:00 pm-9:00 pm
All Kids Eat for Only \$10.00 (Under 12)

420 Magic Mountain Access Rd. Londonderry, VT
www.upperpasslodge.com
802-824-5600

Est. 1971

Slabs • Foundations • Floors

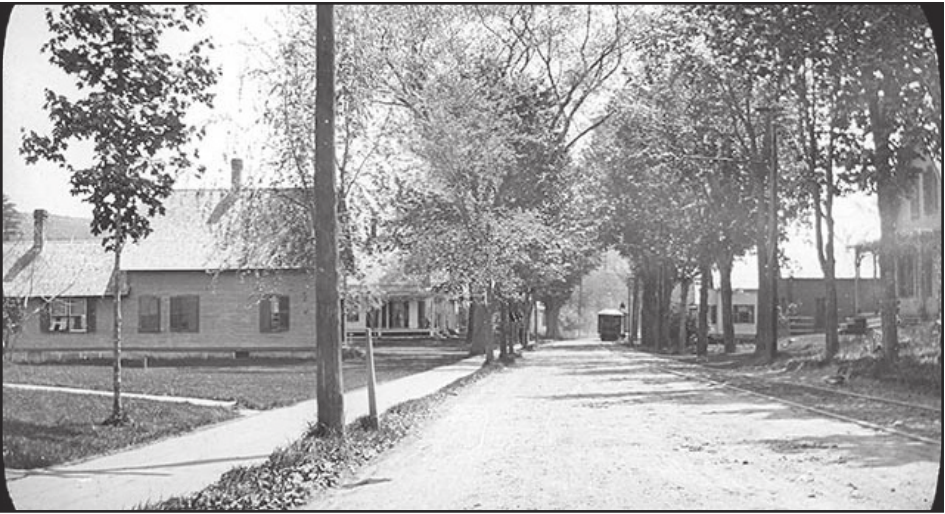
RECORD CONCRETE INC.
QUALITY WORK SINCE 1971

CHARLIE RECORD
802-875-3702
recordconcrete@yahoo.com

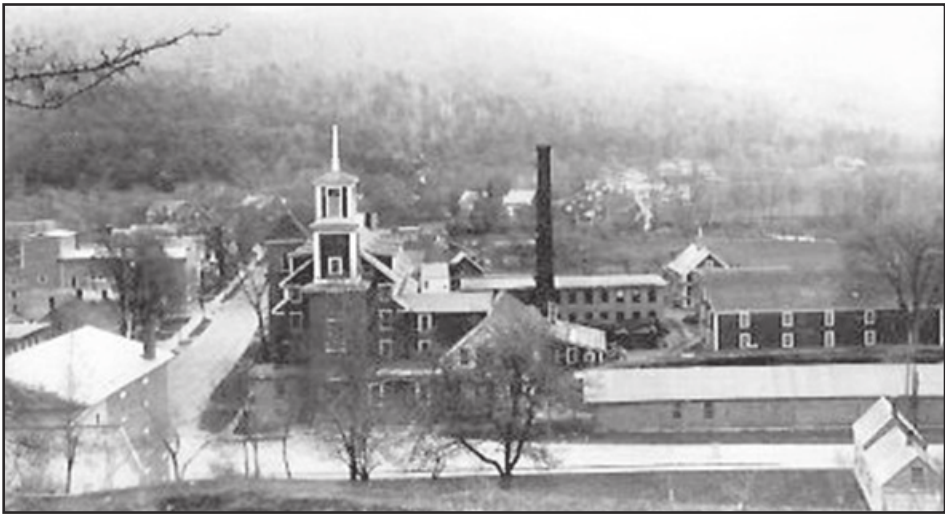
PO BOX 574
25 TOWN FARM ROAD
CHESTER, VT 05143



Looking north of the building that became the Vermont Country Store in Weston.
PHOTO PROVIDED BY WESTON HISTORICAL SOCIETY



Clinton Street in Springfield with trees lining the street.
PHOTO PROVIDED BY SPRINGFIELD ART & HISTORICAL SOCIETY



Murdock's Mill in Proctorsville where Murdock's on the Green and Outer Limits Brewing is today.
PHOTO PROVIDED BY CAVENDISH HISTORICAL SOCIETY



Clarence Martin's store and residence in Ascutneyville, Vt., 1903.
PHOTO PROVIDED BY WEATHERSFIELD HISTORICAL SOCIETY

Est. 1999



Sam's Steakhouse

STEAK • SEAFOOD • SALAD BAR

802.228.2087
Route 103 South • Ludlow, VT 05149
www.SamsSteak.com

Est. 1952

A Farm Hardware Store Since 1952.
R. B. Erskine, Inc.
Grain & Supplies



Chester Depot, VT
875-2333

•Dryshod Boots •Stabilicers & Yak Trax
•Sugaring Supplies •Pet Safe Ice Melters

Monday - Friday, 7:30-5, Saturdays, 7:30-3

Est. 2013

Little Cricket

ART GALLERY

*Fine Art Photography, Beautifully Designed Jewelry,
Organic Skin Care Products, and so Much More!*

802-228-4379
Janie Sydorowich
114 Main Street, Ludlow, VT
www.littlecricketphotography.com

Matthew Sydorowich Computer Repair
www.sydscompufix.com

Est. 1986



DEPOT HOME CENTER

ONE STOP FOR ALL YOUR BUILDING NEEDS

Reg & Jan Bailey, Owners
Box 390, 56 Depot St. • Charlestown, NH 03603
Tel: 603-826-3251 • Fax: 603-826-5336
Open 7 Days a Week

Est. 1992

Salon 2000



"Ignite Your Style"
22 Avon, Chester, VT
802-875-3900

Est. 2007

Wide range of product lines to
serve all your outdoor
power equipment needs for
both work and play!



Fall Mountain Small Engine

1292 Langdon Road
Charlestown, NH
603-826-6842

Est. 1926



LISA'S MARKET

128 Atkinson St. • Bellows Falls, VT
802-463-4118
Monday-Sunday: 8 am - 8 pm

Est. 1974

Helie's Carpet, LLC

Let us Floor You - Our Prices Won't!

We have Serviced the Twin State
Area with Vinyl and Carpet
for over 45 Years!

603-542-9979
281 Washington St.
Claremont, NH

Est. 1938



CHEEVER TIRE SERVICE, INC.

YOUR HOMETOWN FULL SERVICE TIRE STORE

Most Major Brands Available
Specializing in Quality Truck Retread Tires
Family Owned and Operated
Rt. 5 North • Bellows Falls, VT
802-463-3320



Bellows Falls Canal covered bridge is possibly 1870-1880, from stereo view. This is intersection of Canal and Depot streets.

PHOTO PROVIDED BY BELLOWS FALLS HISTORICAL SOCIETY



Originally known as the Eagle Hotel, then Chester House, and last the Davenport. It was torn down in the early 1920s because of disrepair. Later it was rebuilt as Gould's Market, and is now Bargain Corner.

PHOTO PROVIDED BY RON PATCH

Est. 2019

JUDD'S

POWER EQUIPMENT

AUTO REPAIR - OFFICIAL INSPECTION STATION

802-722-4200

6109 US Route 5, Westminster, VT 05158

Open Mon - Sat 7:30 am - 5:00 pm
Closed Sunday

Est. 2010

The Bargain Corner

More than just your average Antique Store

New • Used • Antiques

128 Main Street • Chester, VT
802-875-5745

WE DELIVER

ANYWHERE IN THE UNITED STATES!

bargaincornernh@gmail.com

Open 7 Days 9am - 5pm

We Accept

Visa, MasterCard, Discover, American Express

Est. 1967

JAMES

PLUMBING & HEATING

OIL COMPANY INC

PROPANE GAS & SERVICE

BELLOWS FALLS, VT

802-463-3166

91 PAPER MILL Rd // PO Box 755

FAMILY OWNED & OPERATED

PROVIDING QUALITY SERVICE OVER 40 YEARS

WWW.JAMESFUELS.COM

Est. 1970

Sweet Surrender Bakery



Ludlow, Vermont

Everything from scratch, from donuts to wedding cakes

802-228-8986

Open Daily

Fri-Tue 5am-3pm | Wed & Thur 5am-12pm

44 Pond St #4, Ludlow, VT

Est. 1879



LUDLOW INSURANCE AGENCY, INC.

150 Main St., Ludlow, VT
802-228-8823
LUDINS@TDS.NET
ludlowinsurance.net

Est. 2007



J&H HARDWARE

HARDWARE, PAINT, HOUSEWARES, ELECTRICAL & PLUMBING

Best

802-463-4140

20 Village Square Bellows Falls

Online Customer Service 855-828-9792

www.jandhhardware.doitbest.com

Est. 1968



In the Heart of the Okemo Valley

Kelley Real Estate

2 Lamere Square, Ludlow, VT • 802-228-5333

www.OkemoValley.com

www.KelleyRealEstate.com

Est. 1989

Boccaccio's

Full Service Hair and Tanning Salons

Mon - Fri 9-7 / Sat 8-3

113 Clinton Street | 56 Green Street

Springfield, VT | Bellows Falls, VT

802-885-6265 | 802-463-4495

Like us on Facebook

Est. 1990

Café at Delight

Celebrating 30 Years
September 2020

BEST BREAKFAST
SPECIALS IN TOWN!

145 Main Street, Ludlow VT

802-228-2150

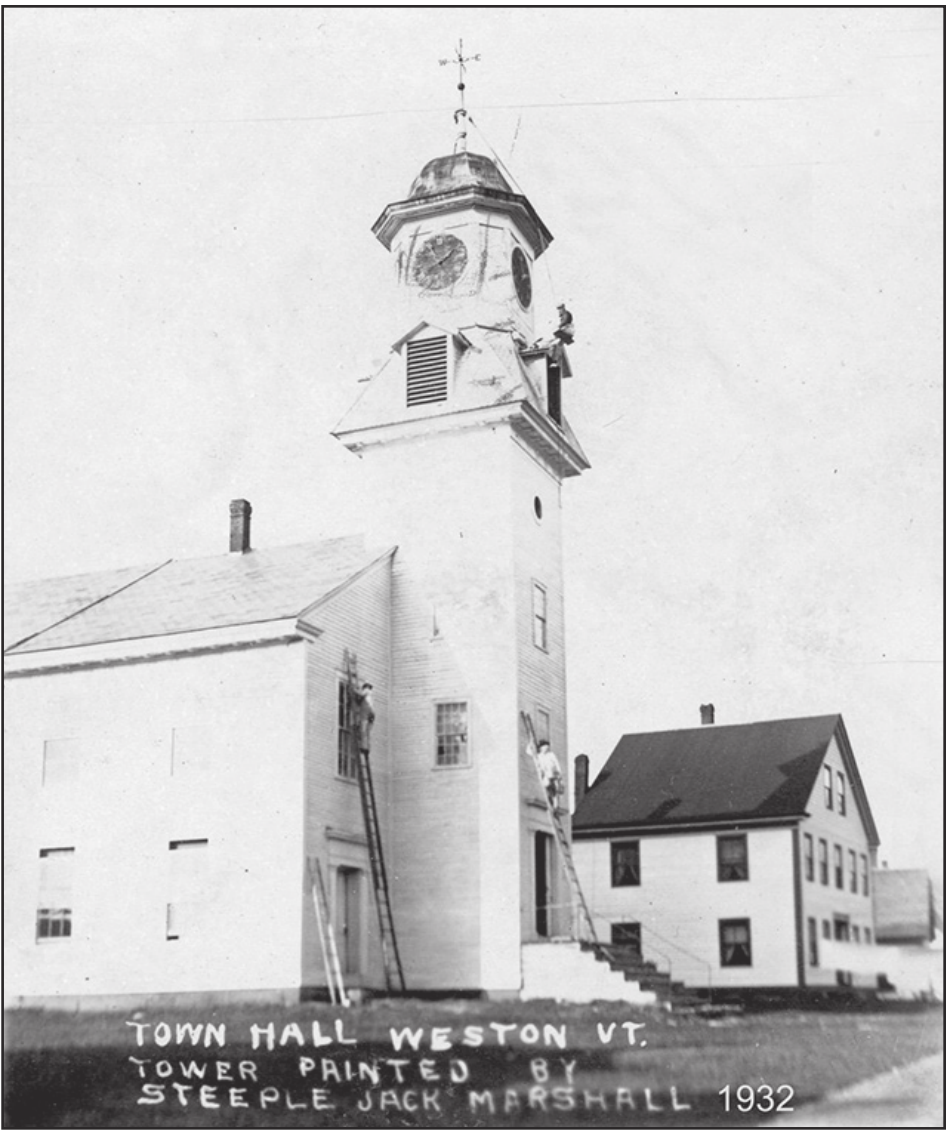
6 FEBRUARY 26, 2020

Yesterday & Today



Baptist Church in Ludlow.

PHOTO PROVIDED BY RON PATCH



Louis Marshall painting the Old Parish Church.

PHOTO PROVIDED BY WESTON HISTORICAL SOCIETY

Est. 1962

**LaValley**
BUILDING SUPPLY, INC.

182 Pleasant St
Ludlow, VT 05149
(802) 228-4665

Est. 2014

**BIG EYES BAKERY**

"Home of the Mini Quiche"
Your local shop for Pies, Quiche, Bread,
Cakes, Cookies & Desserts!
(802) 228-2400
126 Main Street, Ludlow, VT
Visit our Facebook page @ludlowbakery
www.bigeyesbakery.com

Est. 1956

**Allen Bro's**
FARM MARKET

OPEN 7 DAYS 5:30 AM - 9:00 PM
Exit 5 off I-91 • Rte 5 South • Westminster, VT
802-722-3395
www.allenbrothersfarms.com

Est. 2009

**Buffum Realty**

We welcome your listings
Buyer Representation available
Short Sale Specialist

121 Park Street, Springfield, VT 05156
802-885-3000
Buffumrealtyvt.com

Est. 1936

**PINNACLEVIEW EQUIPMENT, INC.**
EST. 1936
WALPOLE, N.H.

Route 12 • Walpole, NH 03608
www.pinnacleviewequipment.com
603-756-3379

Est. 2004


**BIG RED BARN**

Owners Thomas Amsden & DeAnna Robles
Antique Mall - 65 Stalls

802-463-3639
7804 Route 5, Westminster, VT
Mon - Sat 10-5 & Sun 10-4

Est. 2002

♦ ON ROAD DIESEL ♦ OFF ROAD DIESEL ♦
♦ DYED KEROSENE ♦ HOME HEATING OIL ♦
♦ PROPANE ♦ 24 HOUR BURNER SERVICE ♦

**B-A-R-T ENERGY** LLC

Route 103 Transport Park
Rockingham, VT
802-463-9944


Est. 2010

**BEST SEPTIC**
Jeff & Lisa Ruggiero, Owners
All Your Septic Needs



.....
7752 US Route 5, Suite 3, Westminster, VT 05158
BestSeptic@gmail.com • www.bestsepticvt.net
802-463-9444

Est. 2016

**State Farm**
HOME & AUTO INSURANCE

Jerry Farnum, Agent
802-885-2939
240 River St. Springfield, VT



Atlantic & Pacific Tea Co. and J.J. Newberry Co. on Main Street in Springfield.
 PHOTO PROVIDED BY SPRINGFIELD ART & HISTORICAL SOCIETY



The Bellows Falls Bakery on Canal Street and its delivery wagon with sleigh runners, early 1900s, became the Exner Block and is now the home of RAMP with artists space, stores, and apartments.
 PHOTO PROVIDED BY WESTON HISTORICAL SOCIETY



Hiland Hicks house with Hiland and Hattie shown. The house was located at the junction of Upper Falls Road and Main Street in Perkinsville.
 PHOTO PROVIDED



The Odd Fellows Home in Ludlow.
 PHOTO PROVIDED BY RON PATCH



E.A. Wilder with his Star Route Mail truck in Londonderry.
 PHOTO PROVIDED BY LONDONDERRY ART & HISTORICAL SOCIETY



Buttonwood Farm on North Main Street in Chester. Burned to the ground in 1965.
 PHOTO PROVIDED BY CHESTER HISTORICAL SOCIETY

Est. 1988

Father's Restaurant

American Homestyle Cuisine

Breakfast, Lunch, and Dinner

Dine In or Take Out

Open Seven Days 7 am - 8 pm

(802) 463-3909

7079 Route 5, Westminster, VT

Est. 1990

STONE HOUSE

ANTIQUE CENTER

Southern Vermont's Largest Antique Center

20,000 sq. ft. showcasing antiques, quality collectibles, furniture, jewelry, folk art, primitives and home decorating accents. Dealers welcome.

Be a part of the most active center in Southern Vermont.

Open 7 Days a Week, 10-5

802-875-4477

557 Vermont Route 103 South, Chester, VT 05143

sbac@vermontel.net

Est. 1828

Lawrence & Wheeler

INSURANCE

HOME AUTO BUSINESS

"By the Chime Clock"

(802) 885-2178

46 Main Street, Springfield, VT

www.lawrenceandwheeler.com

Est. 1928

BENSON'S

CHEVROLET, INC.

MAIN STREET, LUDLOW, VT

Vermont's Oldest Family Owned Chevrolet Dealership

228-4000 Toll Free 877-228-6127

Service Hours: Mon.-Fri. 8am-5pm • Sat. 8am-Noon

FIND NEW ROADS

Chevrolet Logo

Est. 2011

LISA'S

Corner Deli

Bakery & Provisions

LITTLE LISAI'S MARKET

92 Atkinson St. • Bellows Falls, VT

802-463-4118

Monday-Sunday: 8 am - 8 pm

Est. 1978

The Hatchery

Where brunch isn't just for Sunday anymore

164 Main St.

Ludlow, VT

Egg Illustration

Est. 1988

Headquarters for Men

Walk-In Only Salon

Valari Freeborne, Owner/Operator

802-885-9595

Shopping Plaza, Springfield, VT

Tuesday - Friday 9 - 5, Saturday 7:30 - 12

Like us on Facebook

Est. 2002

Walnut Hill Realty, Inc.

ALLOW US TO REPRESENT YOUR INTERESTS

BUYERS - CHOOSE WISELY!

RENTALS • SALES

417 Route 103 South • Ludlow, VT 05149

802-228-5544

802-228-5548 (fax)

www.walnuthillrealty.net

Est. 1988

DeGrasse

Concrete

Celebrating 32 Years!

✓ Floors ✓ Foundations

✓ Free Estimates ✓ Guaranteed Work

.....

Office: 802-228-8466 • Cell: 802-356-5329

116 Pleasant Street

Ludlow, VT 05149