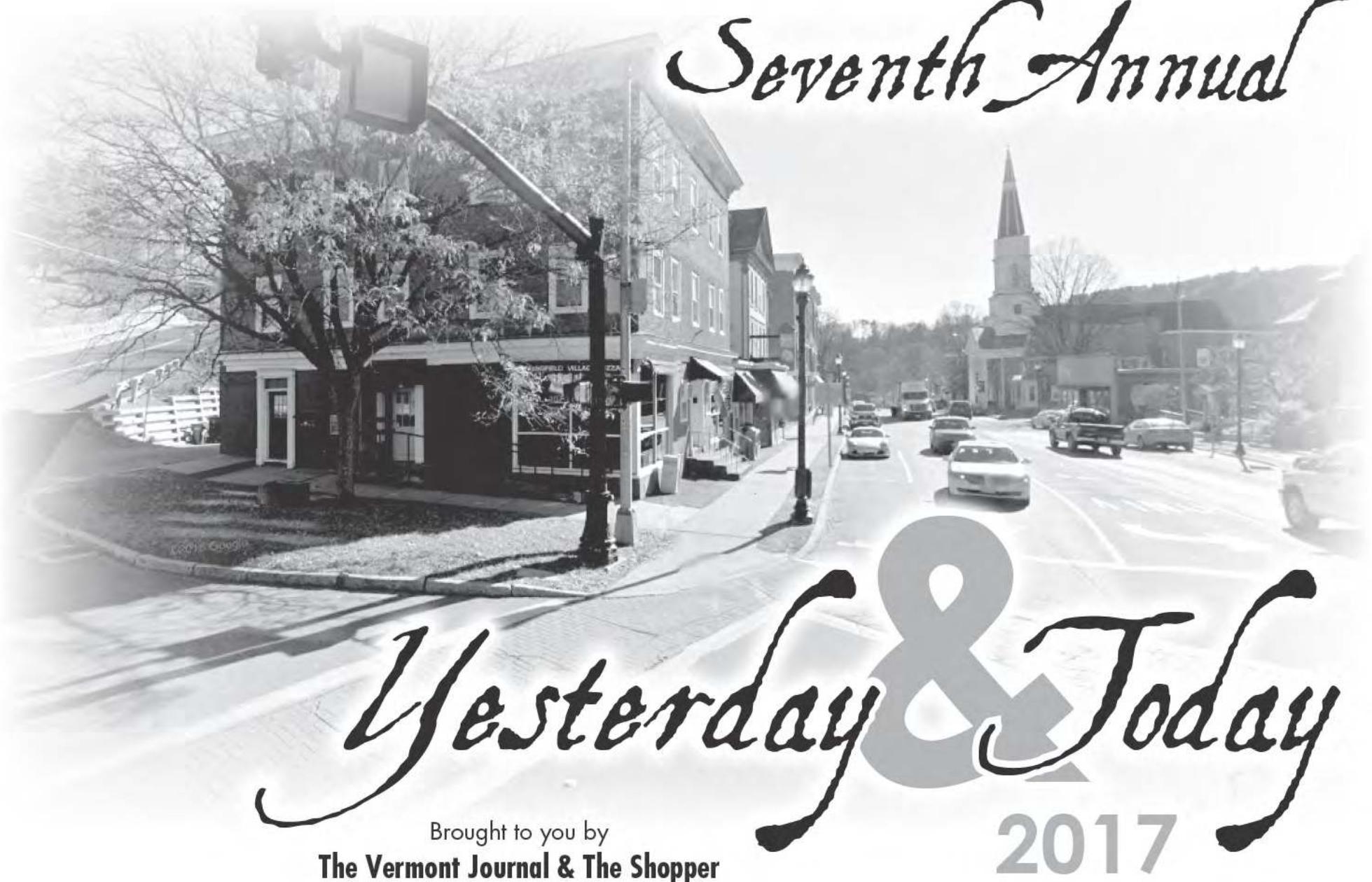


Seventh Annual



Yesterday & Today

Brought to you by
The Vermont Journal & The Shopper

2017



Two "old cronies" in Chester, Vt.

PHOTO PROVIDED BY RON PATCH



The Pot Belly Pub in Ludlow.

PHOTO PROVIDED



The river in Springfield at a low water level.

PHOTO PROVIDED



Abenague Machine Shop in Westminster.

PHOTO PROVIDED BY THE WESTMINSTER HISTORICAL SOCIETY

Since 1928

BENSON'S CHEVROLET, INC.

MAIN STREET, LUDLOW, VT
Vermont's Oldest Family Owned Chevrolet Dealership
228-4000 Toll Free 877-228-6127
Service Hours: Mon.-Fri. 8am-5pm • Sat. 8am-Noon

FIND NEW ROADS 

Est. 1991

HB ENERGY SOLUTIONS

For All Your Energy Needs
Fuel Oil • Propane • Wood Pellets
Solar Photovoltaic • Solar Hot Water
Bridge Street, Springfield, VT 05156
802-885-2300
www.hbenergy.com

Thank You

We wish to thank everyone who sent photos in to us to share in this Yesterday & Today section.

From your friends at
The Vermont Journal & The Shopper




Est. 1956

Allen Bro's FARM MARKET

OPEN 7 DAYS 5:30 AM - 9:00 PM
Exit 5 off I-91 • Rte 5 South • Westminster, VT
802-722-3395
www.allenbrothersfarms.com

Est. 2007



BEST PRICES IN TOWN!

Essex Hot Dogs • Slab Bacon - Sliced to order • New York Strip Steak
Our Own Ground Sirloin Hamburger • Cold Cuts
Ice • Cold Beer • Movie Rentals
Route 11 • Londonderry, VT 05148
(802) 824-8100

Est. 1996

GREATER FALLS INSURANCE

serving VT and NH since 1996



Home • Auto • Farm • Business
Motorcycle • Recreation Vehicles

7190 US Route 5 • Westminster, VT 05158
802-463-1900
www.GreaterFallsInsurance.com



An old car with owner and dog inside.

PHOTO PROVIDED BY PETER FARRAR



Gould's Store at the intersection of Depot, Main and Grafton Streets.

PHOTO PROVIDED BY RON PATCH



Black River Academy, Ludlow.

PHOTO PROVIDED



Railroad Station in the Chester Depot.

PHOTO PROVIDED BY RON PATCH



Springfield Electric Railway Company.

PHOTO PROVIDED

On the Cover

On the cover are photos of Springfield at the intersection of Main, Park, and Summer Streets.

Does anyone know what year the top photo was taken? Tell us!
Ads@VermontJournal.com

VermontJournal
THE SHOPPER

— Est. 1994 —

Green Leaf Cafe
 at 103 Artisans Marketplace

Delightful Quiches
 Fresh Salads
 Delicious Desserts

Open Thursday – Sunday 10 am – 4 pm
 802-875-7400 • greenleafcafe103@gmail.com
www.103artisansmarketplace.com • Find us on Facebook!
 Route 103 & 7 Pine View Road • Chester, VT

— Est. 2010 —

Brewfest Beverage Co.

Take Good Beer Home

WE HAVE LIQUOR!

199 Main Street • Ludlow, VT
 802-228-4261
www.brewfestbeverage.com

— Est. 2012 —

MR. DARCY'S
 BAR & GRILL

Handcrafted burgers, Vermont beer and comfort foods

Open Mon., Tue., Wed., Thu. & Sun. 4:00PM - 9:00PM
 Fri. & Sat. 4:00pm - 10:00pm

31 Route 103 South • Ludlow, Vermont
 802-228-7222

— Est. 1926 —

LISAI'S CHESTER MARKET

Est. 1926 • Choice Meats

Visit our Website www.LisaisChesterMarket.com

Route 103 • Chester Depot
 Open 7 Days A Week, 8AM - 8PM • 875-4715

— Est. 2000 —

J&H HARDWARE

HARDWARE, PAINT, HOUSEWARES, ELECTRICAL & PLUMBING **Best**

20 Village Square, Bellows Falls, VT
 802-463-4140

Online Customer Service:
 855-828-9792



The Fletcher Memorial Library in Ludlow.

PHOTO PROVIDED



Smokeshire Schoolhouse in Andover.

PHOTO PROVIDED BY PETER FARRAR



Watkins Place on Popple Dungeon in Chester.

PHOTO PROVIDED BY RON PATCH



44 Steps, Bellows Falls.

PHOTO PROVIDED BY THE ROCKINGHAM FREE PUBLIC LIBRARY



The Twin Falls in Bellows Falls.

PHOTO PROVIDED BY THE ROCKINGHAM FREE PUBLIC LIBRARY

Est. 2015

The CHO HOUSE
STEAKS • CHOPS • SEAFOOD

Located at 57 Pond Street, Ludlow, VT

Open Nightly

Lounge Opens at 4 pm
Dinning Room Opens at 5 pm

(Closed Wednesdays)

(802) 975-0557

Since 1858

CUMMINGS
HARDWARE CO. & COUNTRY STORE

Vermont's Best Collection

**OVER 10,000 CAST IRON
ITEMS ON DISPLAY STORE WIDE**

Route 103, Chester Depot, Vermont
155 Years Old! • 802-875-3342

OPEN Tuesday, Wednesday, Friday 9-5pm
Saturday 9-12 noon

Est. 1962

LaValley
BUILDING SUPPLY, INC.

182 Pleasant St
Ludlow, VT 05149
(802) 228-4665

Est. 1992

Salon 2000
Day-Spa-Salon



CELEBRATING 25 Years

802-875-3900
22 Avon Road • Chester, VT
Like us on Facebook!

Est. 2007


Wide range of product lines to
serve all your outdoor
power equipment needs for
both work and play!

Fall Mountain Small Engine

1292 Langdon Road
Charlestown, NH
603-826-6842

Since 1993

**WALPOLE
VALLEY
TIRE**



Hours: Monday - Friday 8:00 - 5:00
Saturday 8:00 - Noon

Route 12 • Walpole, NH
603-445-2060



Old Rockingham Village.

PHOTO PROVIDED BY THE ROCKINGHAM FREE PUBLIC LIBRARY



H.E. Huntley with 5 cord pulpwood at the South end of the Chester Green.

PHOTO PROVIDED BY RON PATCH



Simonsville/Andover in 1915.

PHOTO PROVIDED BY PETER FARRAR



J&L on Main Street in Springfield.

PHOTO PROVIDED

Est. 2002

- ON ROAD DIESEL • OFF ROAD DIESEL •
- DYED KEROSENE • HOME HEATING OIL •
- PROPANE • 24 HOUR BURNER SERVICE •

B-A-R-T ENERGY LLC

Route 103 Transport Park
Rockingham, VT
802-463-9944

Est. 2012

THE UPPER PASS LODGE

Saturday & Sunday for Breakfast 8:00-10:30 am
Wednesday - Sunday for Dinner 5:00 pm-9:00 pm
All Kids Eat for Only \$10.00 (Under 12)
420 Magic Mountain Access Rd. Londonderry, VT
www.upperpasslodge.com
802-824-5600

Est. 1973

R. S. CARROLL AGENCY INC.

HOME • FARM • AUTO • LIFE • BUSINESS INSURANCE

PROUDLY REPRESENTING:
CO-OPERATIVE INSURANCE COMPANIES

111 Main Street • P.O. Box 888
Springfield, VT 05156
(802) 885-8400 • (800) 280-5295
www.rscarroll.com

Est. 1926

LISAI'S MARKET
Choose Meats Since 1926

128 Atkinson St. • Bellows Falls, VT
802-463-4118
Monday-Sunday: 8 am - 8 pm

Est. 2014

Maple Leaf DINER

BLUE PLATE SPECIALS DAILY!

Open 7 Days a Week
For Breakfast & Lunch!
Mon.-Fri. 6am-2:30pm • Sat. & Sun. 7-2:30
Route 11 • Londonderry, VT 05148
(802) 824-9652

Est. 1974

THE POT BELLY PUB & RESTAURANT

A LUDLOW TRADITION SINCE 1974
130 MAIN STREET, LUDLOW VT
802-228-8989



Boyton Hill Schoolhouse in Andover.

PHOTO PROVIDED BY PETER FARRAR



The Chester Depot. "Look out for the Engine!"

PHOTO PROVIDED BY RON PATCH



A female driver in the Rockingham area.

PHOTO PROVIDED BY THE ROCKINGHAM FREE PUBLIC LIBRARY



Abenague Machine Shop in Westminster at high water. March 28, 1913.

PHOTO PROVIDED BY THE WESTMINSTER HISTORICAL SOCIETY

Est. 2010

BEST SEPTIC
Jeff & Lisa Ruggiero, Owners
All Your Septic Needs

WE DO:
Tank Pumping • Septic Repairs • Snaking
Camera Service • Jetting • Portable Toilet Rentals
Inspections • Tank Locating • Filters • Pipe Thawing

7752 US Route 5, Suite 3, Westminster, VT 05158
BestSeptic@gmail.com • www.bestsepticvt.net
802-463-9444

Est. 1938

CHEEVER TIRE SERVICE, INC.
YOUR HOMETOWN FULL SERVICE TIRE STORE

Most Major Brands Available
Specializing in Quality Truck Retread Tires
Family Owned and Operated

Rt. 5 North • Bellows Falls, VT
802-463-3320



The railway in Westminster looking North. Road on the left leads to an underpass, the Railroad Station, and to Bellows Falls.

PHOTO PROVIDED BY THE WESTMINSTER HISTORICAL SOCIETY

Since 1990

Café at Delight

BEST BREAKFAST SPECIALS IN TOWN!

Celebrating 27 Years September 2017

145 Main Street, Ludlow VT
802-228-2150

Est. 1952

A Farm Hardware Store Since 1952.
R. B. Erskine, Inc.
Grain & Supplies

Est. 1952

Chester Depot, VT
875-2333

- Muck Boots
- Stabilizers & Yak Trax
- Sugaring Supplies
- Pet Safe Ice Melters

Monday - Friday, 7:30-5, Saturdays, 7:30-3

Est. 2013

SHONA GRILL
92 ROCKINGHAM STREET
BElLOWS FALLS, VT
802-460-1200

THE #1 RANKED RESTAURANT IN BElLOWS FALLS, VT VIA TRIPADVISOR!



Dorand's Store in Chester, now known as Green Mountain Leather.
PHOTO PROVIDED BY RON PATCH



Goulds Mills in Springfield.
PHOTO PROVIDED



Westminster Railroad Station looking North, Northwest.
PHOTO PROVIDED BY THE WESTMINSTER HISTORICAL SOCIETY



Children gathering squashes at the Warner Home in Saxtons River.

PHOTO PROVIDED BY THE ROCKINGHAM FREE PUBLIC LIBRARY



7003 Hangar in Springfield, 1930.

PHOTO PROVIDED

Est. 1988

DeGrasse Concrete

Celebrating 29 Years!

- ✓ Floors ✓ Foundations
- ✓ Free Estimates ✓ Guaranteed Work

Office: 802-228-8466 • Cell: 802-356-5329
116 Pleasant Street
Ludlow, VT 05149

Est. 2006

The Book Nook

Helping Readers Find Books Since 2006

History begins in novel and ends in essay.
~Thomas Babington Macaulay

136 Main Street, Ludlow, VT 802-228-3238 www.thebooknookvt.com

Est. 2011

LITTLE LISAI'S MARKET

92 Atkinson St. • Bellows Falls, VT
802-463-4118
Monday-Sunday: 8 am - 8 pm

Est. 1946

K.BEEBE, INC.

CABLE TOOL WELL DRILLING & HEATING

YOUR WATER SYSTEMS EXPERT

Pump Sales & Service

K. SHELDON BEEBE
802-463-3725
Bellows Falls, Vermont 05101

Est. 1936

Pinnacle View Equipment Inc.

EST. 1936
WALPOLE, NH

Route 12 • Walpole, NH 03608
www.pinnacleviewequipment.com
603-756-3379



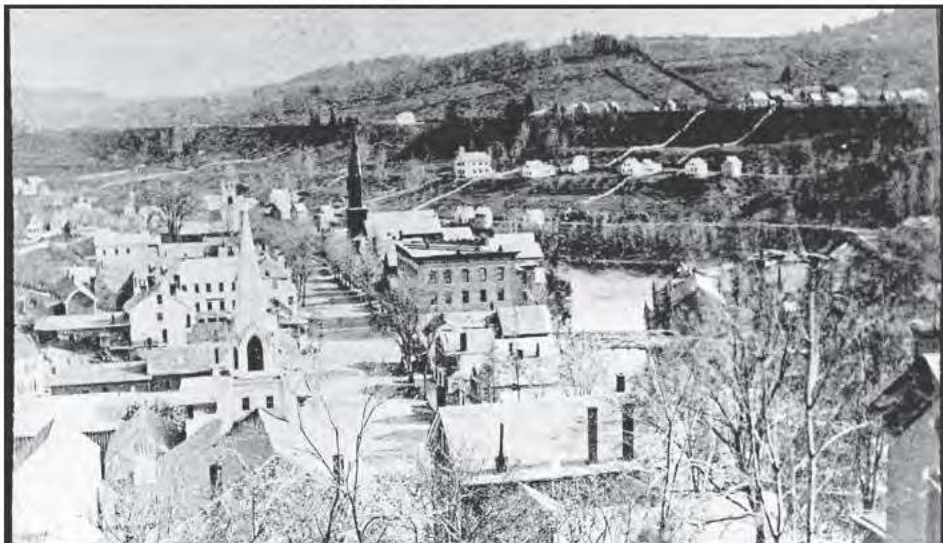
Paul Ballou and the Chester Boy Scouts 1933.

PHOTO PROVIDED BY RON PATCH



Railway running through the water in Bellows Falls.

PHOTO PROVIDED BY THE ROCKINGHAM FREE PUBLIC LIBRARY



Main Street in Springfield.

PHOTO PROVIDED



Manually cutting ice in Springfield.

PHOTO PROVIDED

Est. 1950

MOTEL IN THE MEADOW

Conveniently Located to
Okemo, Bromley
and Magic Mtns.

Pat Budnik, Inkeeper "Your All Season, Country Home
Away From Home"

936 Rt. 11 W.
Chester, VT

802-875-2626

www.motelinthemeadow.com

Established 1950





Est. 1990

**STONE HOUSE
ANTIQUES**

Southern Vermont's Largest Antique Center
20,000 sq. ft. showcasing antiques, quality collectibles, furniture,
jewelry, folk art, primitives and home decorating accents. Dealers welcome.
Be a part of the most active center in Southern Vermont.

Open 7 Days a Week, 10-5

802-875-4477

557 Vermont Route 103 South, Chester, VT 05143

shac@vermontel.net

Est. 2002

Walnut Hill Realty, Inc.

BUYERS - CHOOSE WISELY!

ALLOW US TO REPRESENT YOUR INTERESTS

FEE-BASED LISTING SERVICE

RENTALS • PROPERTY MANAGEMENT

417 Route 103 South • Ludlow, VT 05149

802-228-5544 • 877-9BUYERS

802-228-5548 (fax)

www.walnuthillrealty.net

Est. 1980

Le Studio Gymnastics & Dance

37 Years of Building Confidence Through Skill and Self-Esteem

Making Happy Children our
Priority since 1980

7752 US Route 5, Westminster, VT 05158
(802) 463-9010

gymbiz35@yahoo.com | www.lestudio.biz

Accepting Vermont Subsidy

Since 1982

CHESTER HARDWARE

21 Main St. Chester, VT

802-875-2693




chesterhardware.doitbest.com

Est. 1879

LUDLOW INSURANCE AGENCY, INC.

150 Main St. Ludlow, VT

802-228-8823